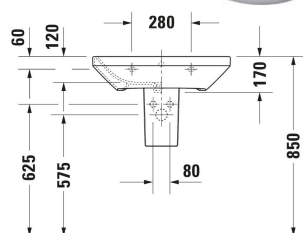
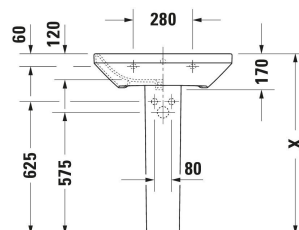
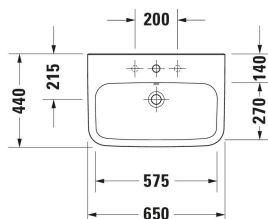


Washbasin # 2319650000

| < 650 mm > |



Washbasin	Dimension	Weight	Order number
Square, Tap hole platform: Yes, Overflow: Yes, Underside glazed, Back side glazed: No, 650 mm, Internal dimensions: 575x270 mm			
<b>Colors</b>			
00 White High Gloss			
<b>Variant</b>			
● White High Gloss, Rectangular, Number of washing areas: 1 Middle, Number of faucet holes per wash area: 1 Middle	650x440 mm	18.400 kg	2319650000
<b>Accessory</b>			
Push-open waste Ø 63,5 mm	Ø 63.5 mm	0.35 kg	005052
<b>Suitable products</b>			
Siphon cover Type of mounting: Wall-mounted, 175 x 280 mm	175 x 280 mm		085830
Pedestal Type of mounting: Floorstanding, 170 x 190 mm	170 x 190 mm		085829
<b>Recommended faucets</b>			
Single lever basin mixer M Ceramic cartridge, Height: 175 mm, Projection: 113 mm, Spray mode: Normal spray, Aerator adjustable, recommended operating pressure: 1 - 5 bar, Noise class: I, Handle version: lever handle, 143 x 46 mm	143 x 46 mm		C11020001
Single lever basin mixer M Chrome, Ceramic cartridge, Height: 170 mm, Projection: 139 mm, Spray mode: Normal spray, Aerator adjustable, Temperature limit adjustable, recommended operating pressure: 1 - 5 bar, Noise class: I, Handle version: lever handle, 175 x 50 mm	175 x 50 mm		B11020001

Washbasin # 2319650000

|< 650 mm >|

<p>Single lever basin mixer M Chrome, Ceramic cartridge, Height: 165 mm, Projection: 138,5 mm, Spray mode: Normal spray, Aerator adjustable, Temperature limit adjustable, recommended operating pressure: 1 - 5 bar, Noise class: I, Handle version: lever handle, 175 x 41 mm</p>	175 x 41 mm	B21020001
<p>Single lever basin mixer Ceramic cartridge, Height: 74 mm, Spray mode: Normal spray, Aerator adjustable, Including trim parts, recommended operating pressure: 1 - 5 bar, Noise class: I, Handle version: lever handle, Unified Water Label (UWL) Class: 1, 173 x 174 mm</p>	173 x 174 mm	C11070003
<p>Single lever basin mixer M Chrome, Ceramic cartridge, Height: 170 mm, Projection: 139 mm, Water connection: Flexible connecting hoses, 3/8", Spray mode: Normal spray, Aerator adjustable, Temperature limit adjustable, recommended operating pressure: 1 - 5 bar, Noise class: I, Handle version: lever handle, 175 x 50 mm</p>	175 x 50 mm	B11020002
<p>Single lever basin mixer Ceramic cartridge, Height: 74 mm, Water connection: Basic Set, Spray mode: Normal spray, Aerator adjustable, Including trim parts, recommended operating pressure: 1 - 5 bar, Noise class: I, Handle version: lever handle, Unified Water Label (UWL) Class: 1, 173 x 225 mm</p>	173 x 225 mm	C11070004
<p>Single lever basin mixer M Chrome, Ceramic cartridge, Height: 165 mm, Projection: 138,5 mm, Water connection: Flexible connecting hoses, 3/8", Spray mode: Normal spray, Aerator adjustable, Temperature limit adjustable, recommended operating pressure: 1 - 5 bar, Noise class: I, Handle version: lever handle, 175 x 42 mm</p>	175 x 42 mm	B21020002

*All drawings contain the necessary measurements which are subject to standard tolerances. They are stated in mm and are non-binding. Exact measurements, in particular for customised installation scenarios, can only be taken from the finished piece.*