

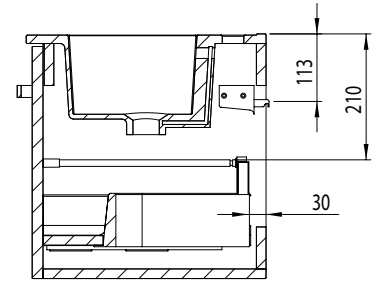
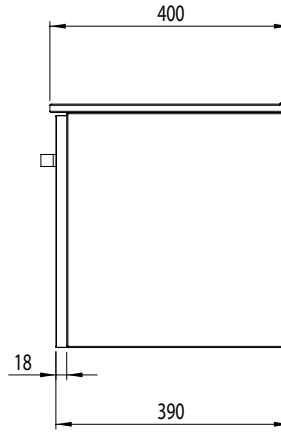
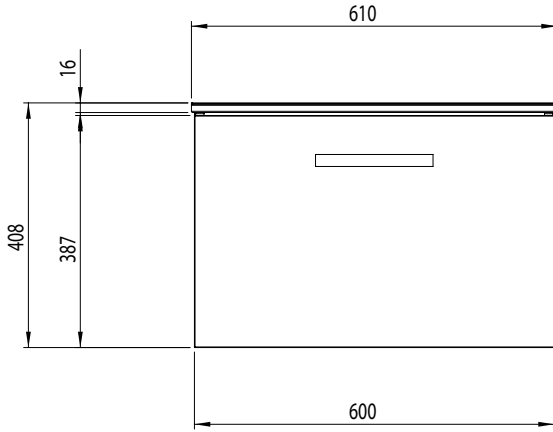
Technical Data Sheet

INSTINCT®

ALPHA 600mm Wall Mounted Unit

Whats in the box: 1x INST045155 + Wall Fixings

*Reference basin TDS for further info



Diagrams not to scale
All dimensions in mm
tolerance of +/-5mm

Materials

Carcass: 16mm MFC

Fascia Components: 18mm MDF

**Dimensions are subject to change, customers are advised to measure actual product before commencing installation.

***Fixing point dimensions are for guidance only/the positions of wall fixing must be checked when product is received.

Extra Dimensions

Internal Drawer Depth - Front to Back:	326mm
Internal Drawer Height:	68mm
Internal Drawer Width:	531mm
Drawer Cut Out (W&D):	140mm x 230mm
Hanger Centres:	550mm

FAQs

Q: How big is the plumbing void at the back of the furniture?	A: 30mm
Q: How far apart are the hole centres for the handles?	A: 128mm (comes with pre-drilled holes)
Q: Are the handles fitted?	A: No, handles need fitting.
Q: Are the runners soft close?	A: The runners are both soft close and quick release.
Q: How deep is the unit when the drawers are fully open?	A: Approx. 700mm including handle.
Q: Can the drawers be adjusted?	A: The drawers can be adjusted as detailed in the supplied instructions.
Q: What is the interior finish of the unit?	A: The same finish as the exterior.

NOTE: Colours unique to Instinct - No RAL Code available