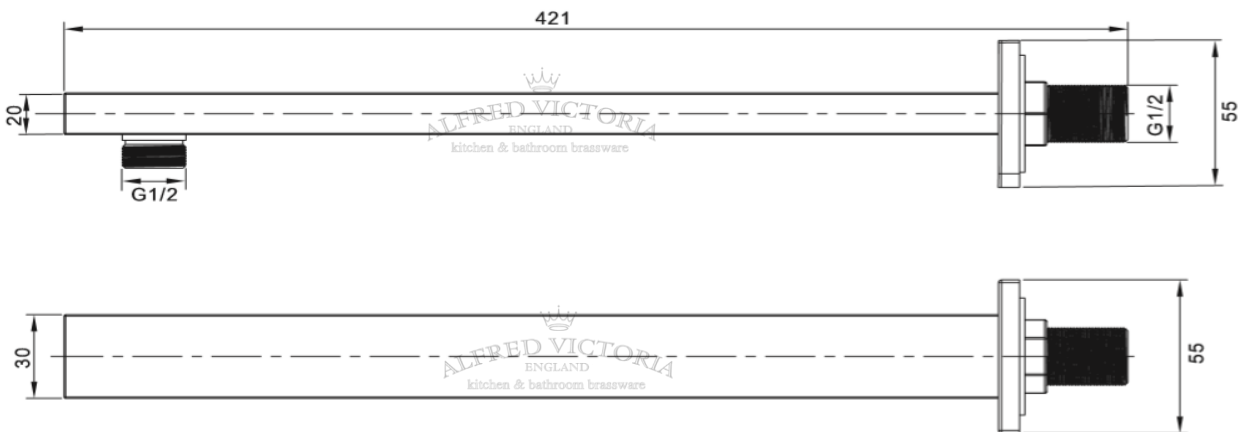


TECHNICAL DATA SHEET

SA06K 380mm Rectangular Shower Arm

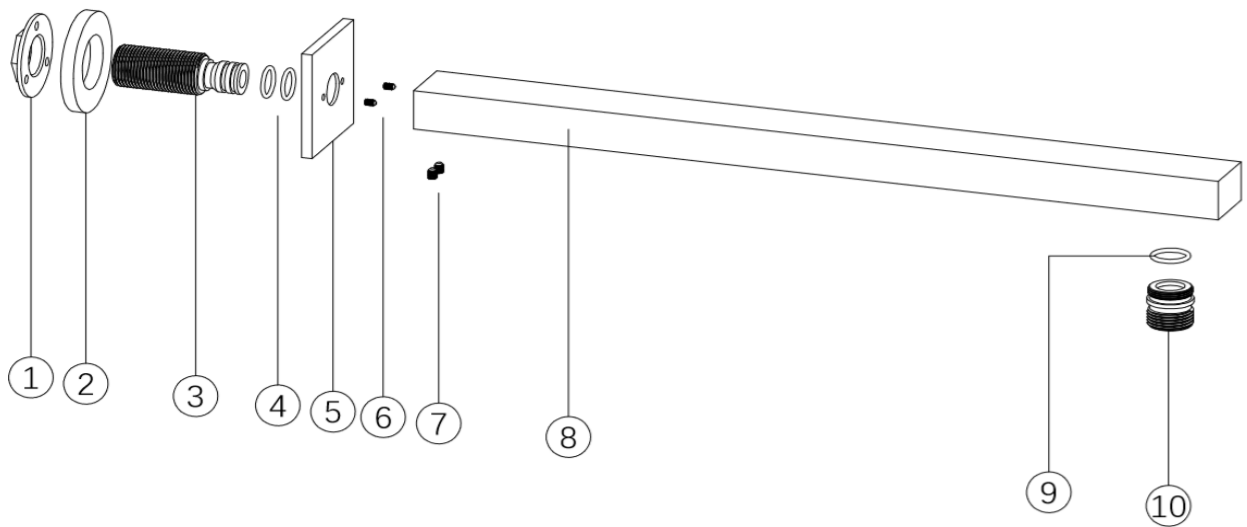
Barcode	1729169974395
Product Code	SA06K
Construction	Brass Body (CuZn38Pb18)
Finishes	Matt Black
Product Type	Contemporary
Plumbing Systems	Suitable for all plumbing systems
Certification	-
Fitting	G1/2" BSP external (male) thread
Packaging	68.5 x 47 x 35cm / carton (50 boxes), Dimension: 46 x 6.2 x 6.5cm / box; Weight: 0.54Kg / box
Guarantee	1 years against manufacturing faults (excluding serviceable parts)
Additional Information	Length: 380mm



Flow Rates (Litres per minute)

System Pressure	0.1 Bar	0.2 Bar	0.3 Bar	0.5 Bar	1.0 Bar	1.5 Bar	2.0 Bar	3.0 Bar	4.0 Bar	5.0 Bar
SA06K	-	-	-	-	-	-	-	-	-	-

The information contained on this page was correct at date of issue. Fitting dimensions are provided as a guide only. Some variation may occur due to manufacturing tolerances. We pursue a policy of continuing improvement in design and performance of our products and so reserve the right to change specifications without prior notice.



SA06K

No.	DESCRIPTION	QTY
1	BRASS BACK NUT	1
2	BASE PLATE WASHER	1
3	INLET CONNECTOR	1
4	NBR CONNECTOR O-RING	2
5	BASE PLATE	1
6	BASE PLATE GRUB SCREW	2
7	SHOWER ARM GRUB SCREW	2
8	BRASS SHOWER ARM	1
9	NBR CONNECTOR O-RING	1
10	OUTLET CONNECTOR	1

Alfred Victoria Exploded Drawings			Material:	Assembly	Size:	A4
			(Date:D/M/Y)	Scale:	None	Issue No: 01
Drawn by:	Konstantine	28/06/2021				
Checked by:	Lee	28/06/2021				
Approved by:	T. K.	28/06/2021				
Drawing Name:						